



GMT MONTHLY MEMBERSHIP PROGRESS REPORT

Results as of: 4/30/2018

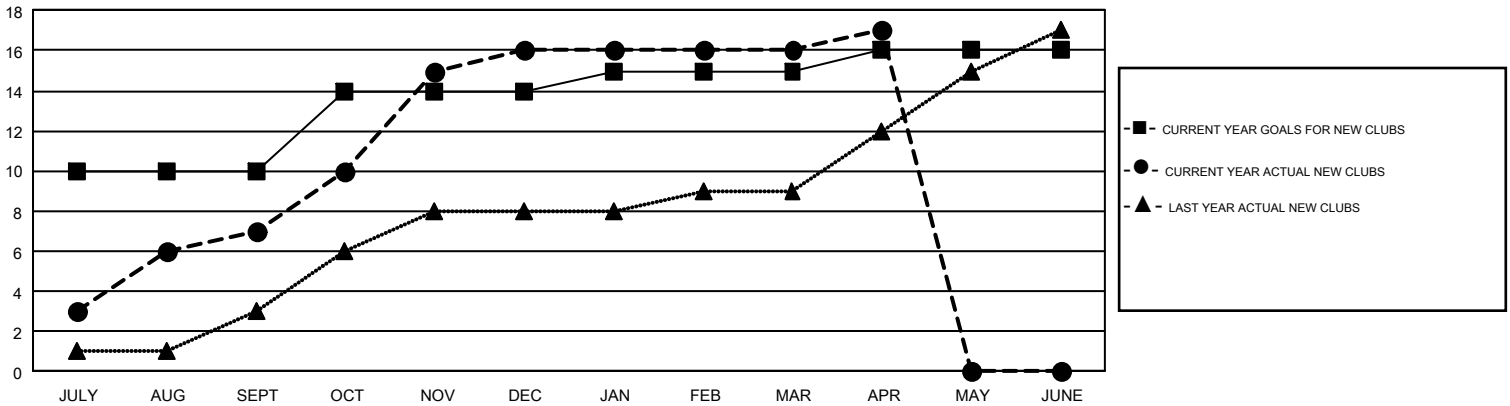
GMT Constitutional Area 5, Group G

GMT: TERESA MANN

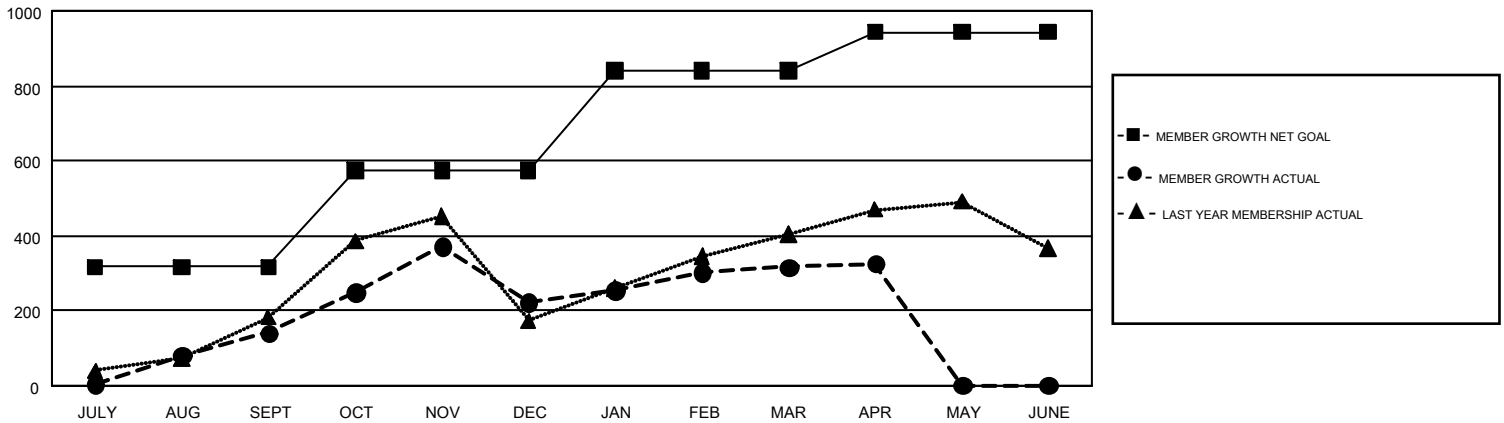
REPORT DOES NOT INCLUDE CLUBS IN UNDISTRICTED AREAS.

| Clubs | | | | Members | | | |
|-----------------------|---------------|-----------|---------------|-----------------------|------------------------|----------------------|--|
| RESULTS FOR 2017-2018 | | | | RESULTS FOR 2017-2018 | | | |
| QUARTER | NEW CLUB GOAL | NEW CLUBS | DROPPED CLUBS | QUARTER | MEMBER GROWTH NET GOAL | MEMBER GROWTH ACTUAL | DROPPED MEMBERS ACTUAL (including transfers) |
| JULY/AUG/SEPT | 10 | 7 | 2 | JULY/AUG/SEPT | 317 | 526 | 361 |
| OCT/NOV/DEC | 4 | 9 | 1 | OCT/NOV/DEC | 258 | 488 | 392 |
| JAN/FEB/MAR | 1 | 0 | 1 | JAN/FEB/MAR | 265 | 283 | 175 |
| APR/MAY/JUNE | 1 | 1 | 0 | APR/MAY/JUNE | 103 | 75 | 61 |

GOALS AND ACTUAL NEW CLUBS CUMULATIVE



GOALS AND ACTUAL MEMBERS CUMULATIVE



| | | |
|---|---|--|
| DROPPED CLUBS: 4 | 209 CLUBS OF 377 ADDED 1 OR MORE NEW MEMBERS | GENDER DISTRIBUTION MALE 6,077 (59.44%) FEMALE 4,146 (40.56%) |
| DROPPED MEMBERS DECEASED 26 CLUB CANCELLED 40 OTHER 923 TOTAL 989 | CLICK HERE FOR CUMULATIVE MEMBERSHIP DATA | TOTAL FAMILY UNIT MEMBERS 400 FAMILY MEMBERS PAYING HALF DUES 219 |